

TH-22 (1)
TH-19 (1)
TH-10 (1)
TH-24 (1)

E1-3 (1)

RHEC-1 (1)

Sand Lake Sample (1)

SAND LAKE

SUNDI LAKE

JEWEL LAKE

CAMPBELL LAKE

J-2 (1)

KA-2C (1)

HH1-3 (2)
HH1-5 (3)
HH1-14 (2)
HH1-13 (2)

HH1-2 (1)

HH1-7 (1)

HH1-20 (1)

HH1-18 (1)

HH1-39 (1)

HH1-38 (2)

HH1-36 (1)

HH2-2 (1)

SL-3 (5)

SL-4D (4)

SL-41 (5)

Bing-B1 (1)

R-8 (1)

CP1-5 (1)

CP2-7 (1)

B-B1 (1)

CP1-7 (1)

WC-1 (1)

SH3-4 (2)

SH3-1 (1)

SH1-9 (1)

SH1-8 (1)

SH1-3 (1)

SL-6D (1)

SL-6S (1)

South Pond Sample (1)

SL-5D (1)

SL-5S (4)

SH2-6(16) (1)

SH2-5B (1)

SH2-6(4A) (1)

SH2-6(9) (1)

SH2-7A (3)

SH2-6 (6)

SL-1 (6)

SL-2 (6)

KE-22 (6)

KE-21 (5)

SL#23-10 (1)

SL#24-17 (1)

SL#25-11 (1)

SL#26-13 (1)

SL#27-12 (1)

SL2-12 (1)

SL#2-1-21 (1)

SL#23-16 (2)

SL#23-11 (1)

SL2-9B (1)

SL1-9 (1)

SL#26-14 (1)

SL#27-12 (1)

JW-1 (1)

TR-30 (1)

TR-31 (1)

JLH1-36B (1)

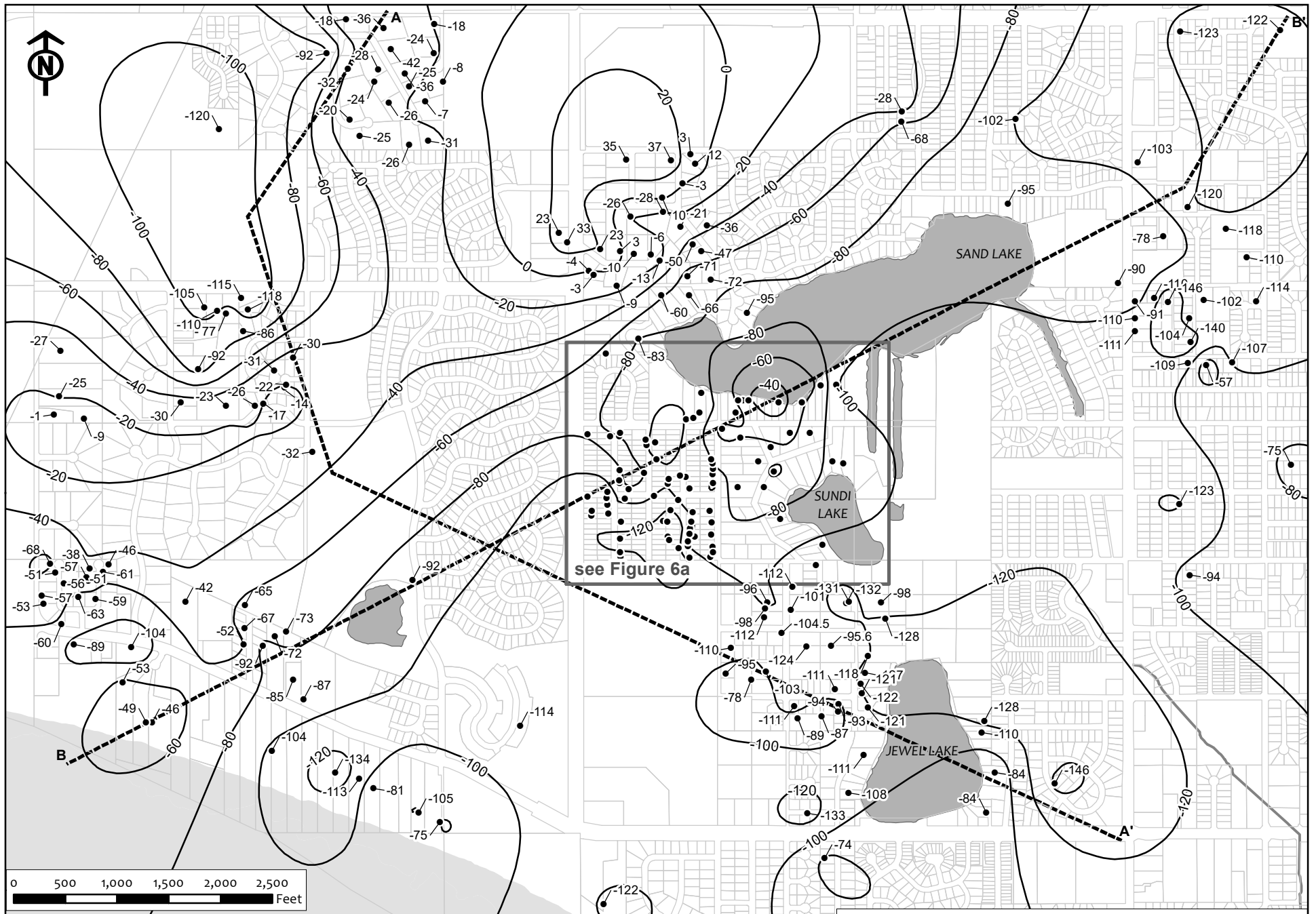


Figure 6. Structure contour map of the base of the Bootlegger Cove Formation (BCF).
 All well locations are approximate. Contour Interval is 20 feet. Vertical datum is MOA72.

- Well locations are shown with structure elevation (ft above MOA72)
- Elevation contour of the structure surface
- - - Cross Section Lines (see Figures 7 & 8)

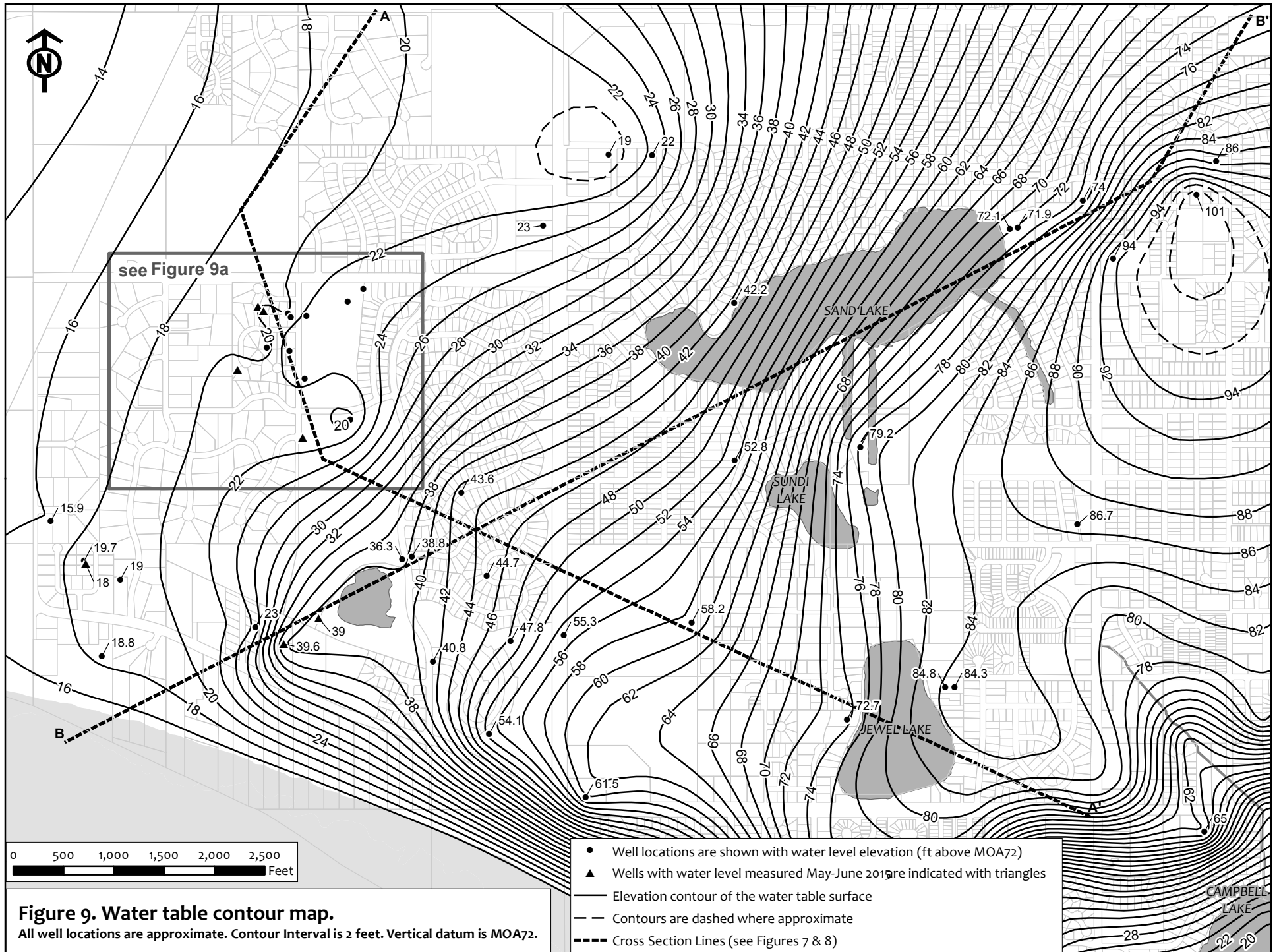
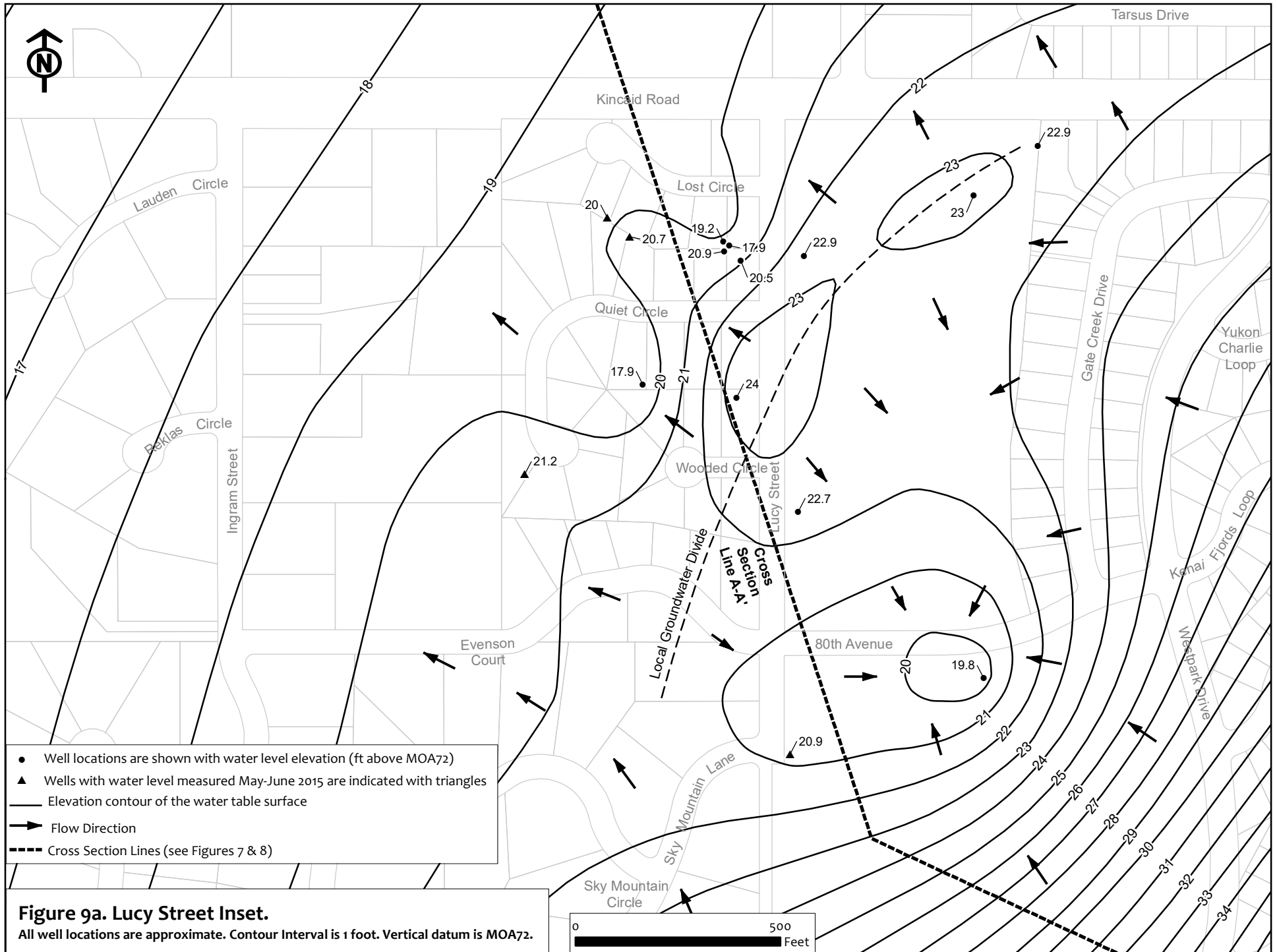


Figure 9. Water table contour map.
 All well locations are approximate. Contour Interval is 2 feet. Vertical datum is MOA72.

- Well locations are shown with water level elevation (ft above MOA72)
- ▲ Wells with water level measured May-June 2015 are indicated with triangles
- Elevation contour of the water table surface
- - - Contours are dashed where approximate
- - - Cross Section Lines (see Figures 7 & 8)



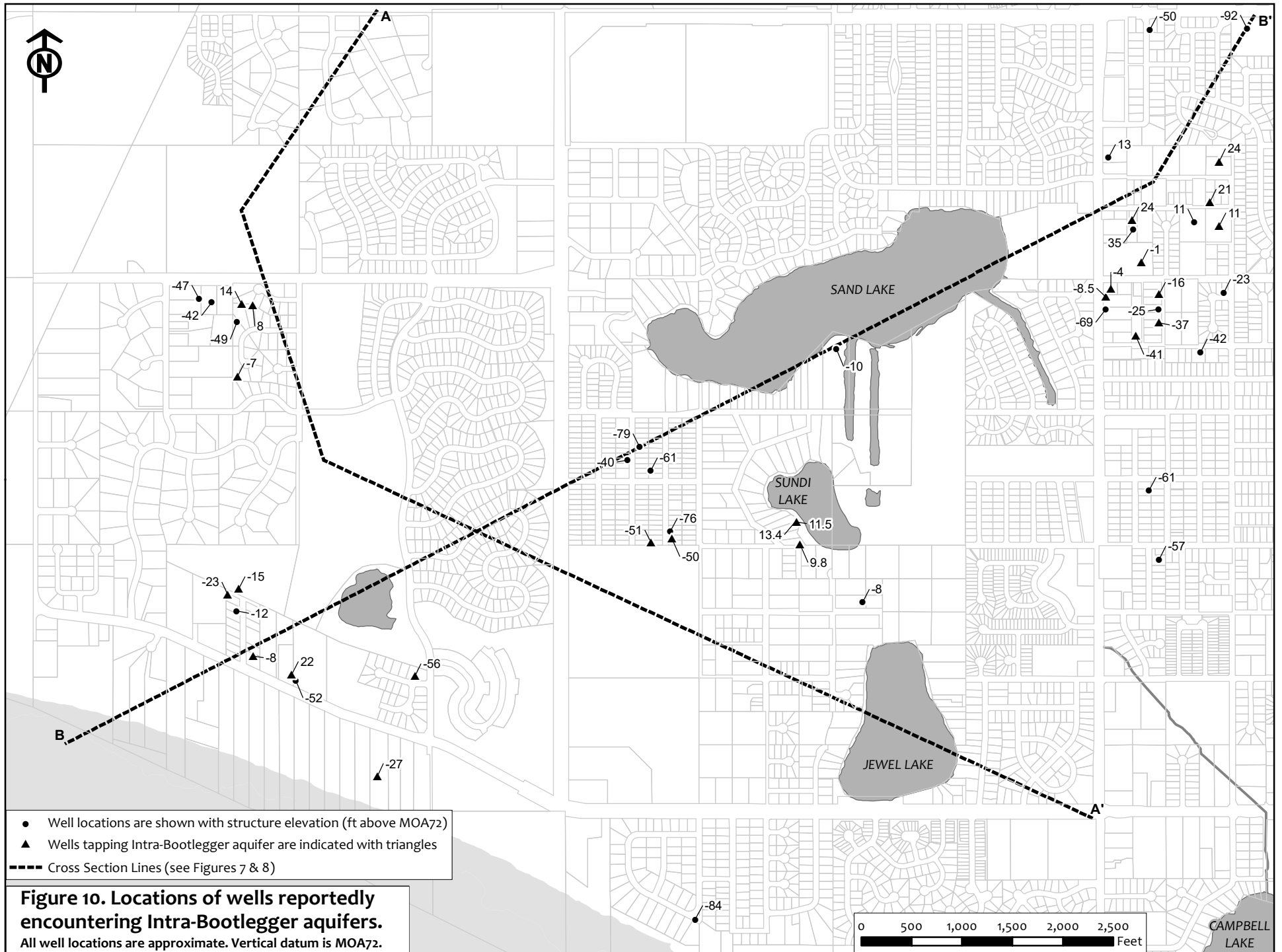


Figure 10. Locations of wells reportedly encountering Intra-Bootlegger aquifers.
 All well locations are approximate. Vertical datum is MOA72.

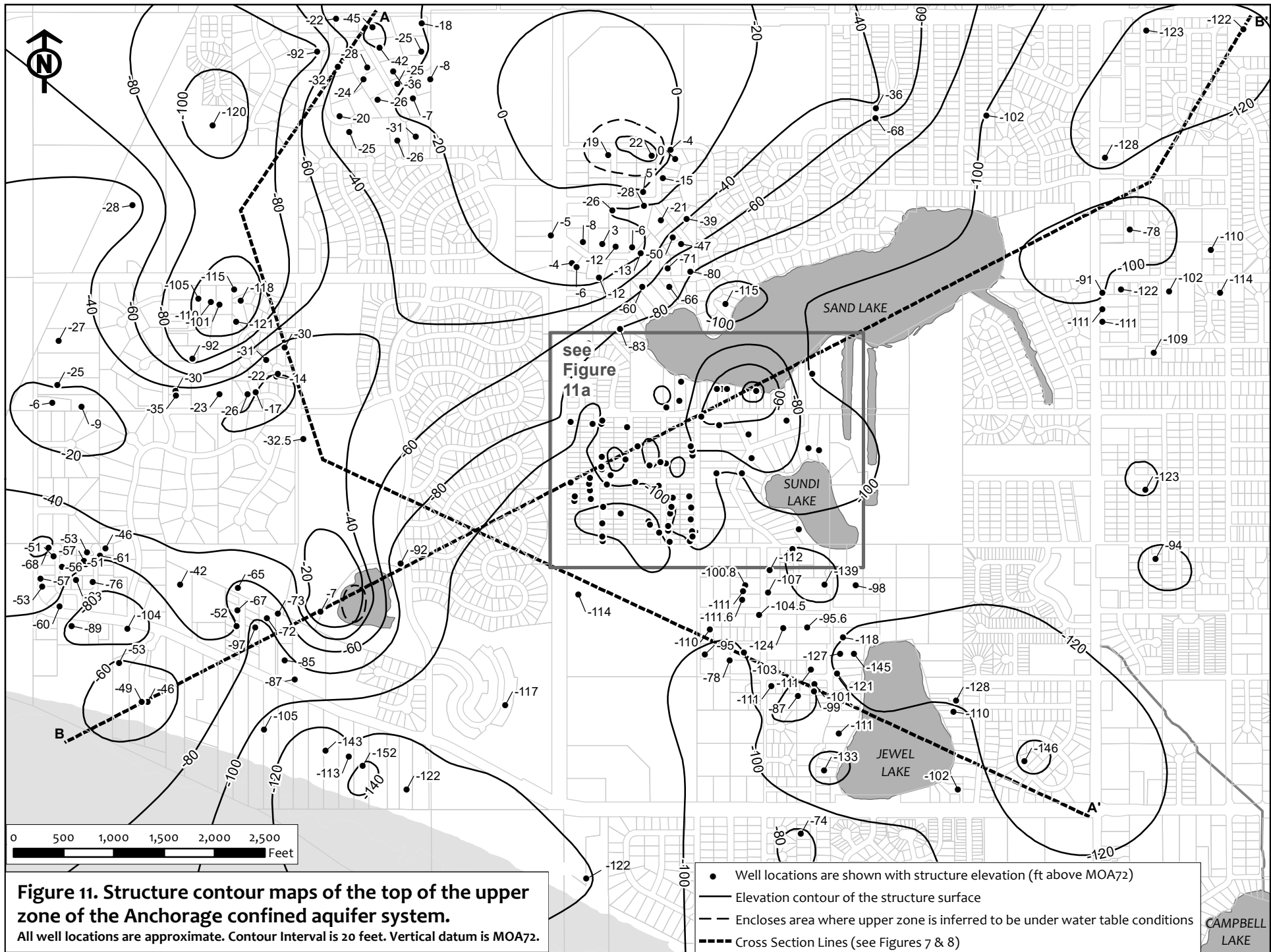
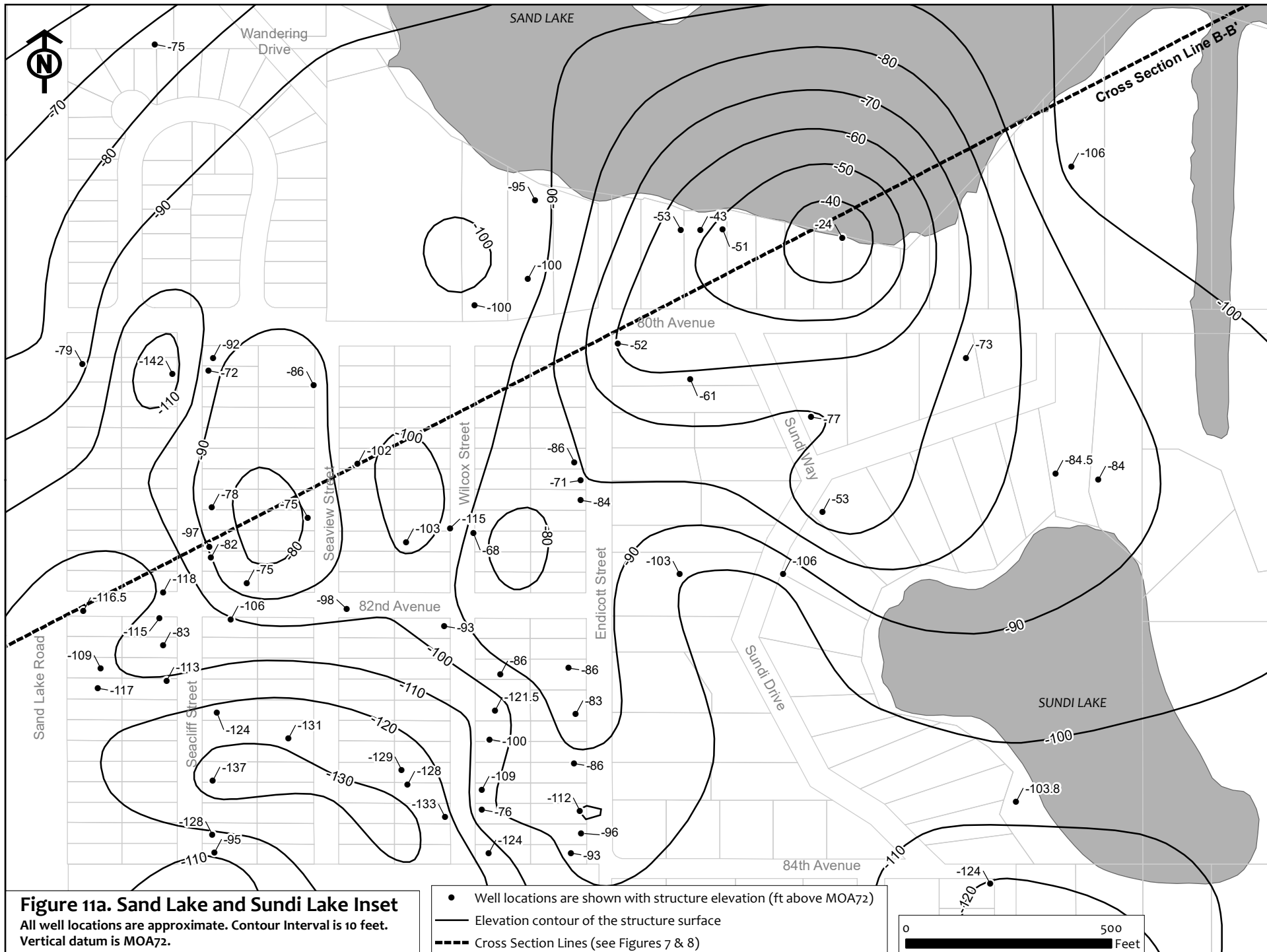
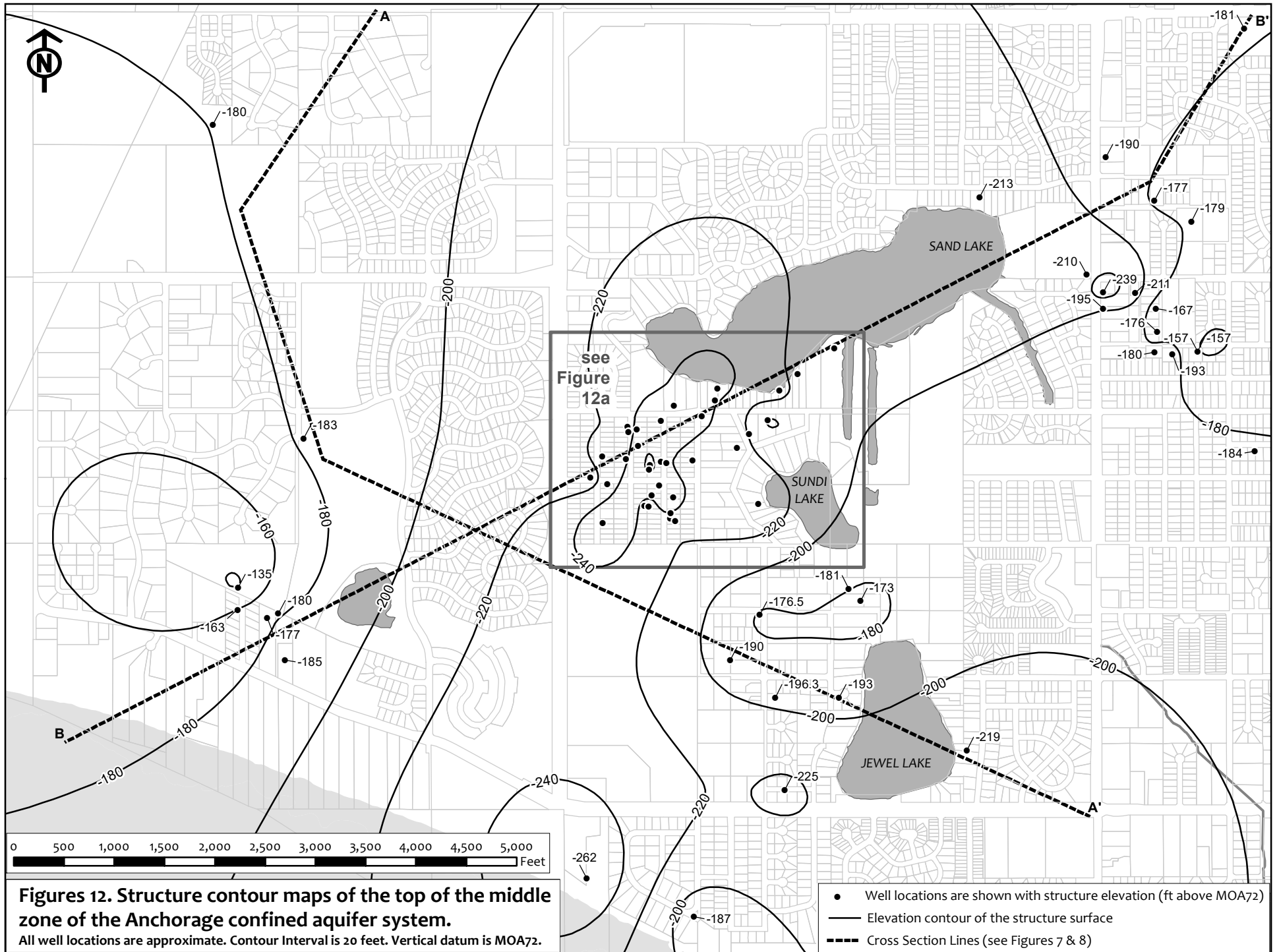


Figure 11. Structure contour maps of the top of the upper zone of the Anchorage confined aquifer system.
 All well locations are approximate. Contour Interval is 20 feet. Vertical datum is MOA72.

- Well locations are shown with structure elevation (ft above MOA72)
- Elevation contour of the structure surface
- - - Encloses area where upper zone is inferred to be under water table conditions
- Cross Section Lines (see Figures 7 & 8)

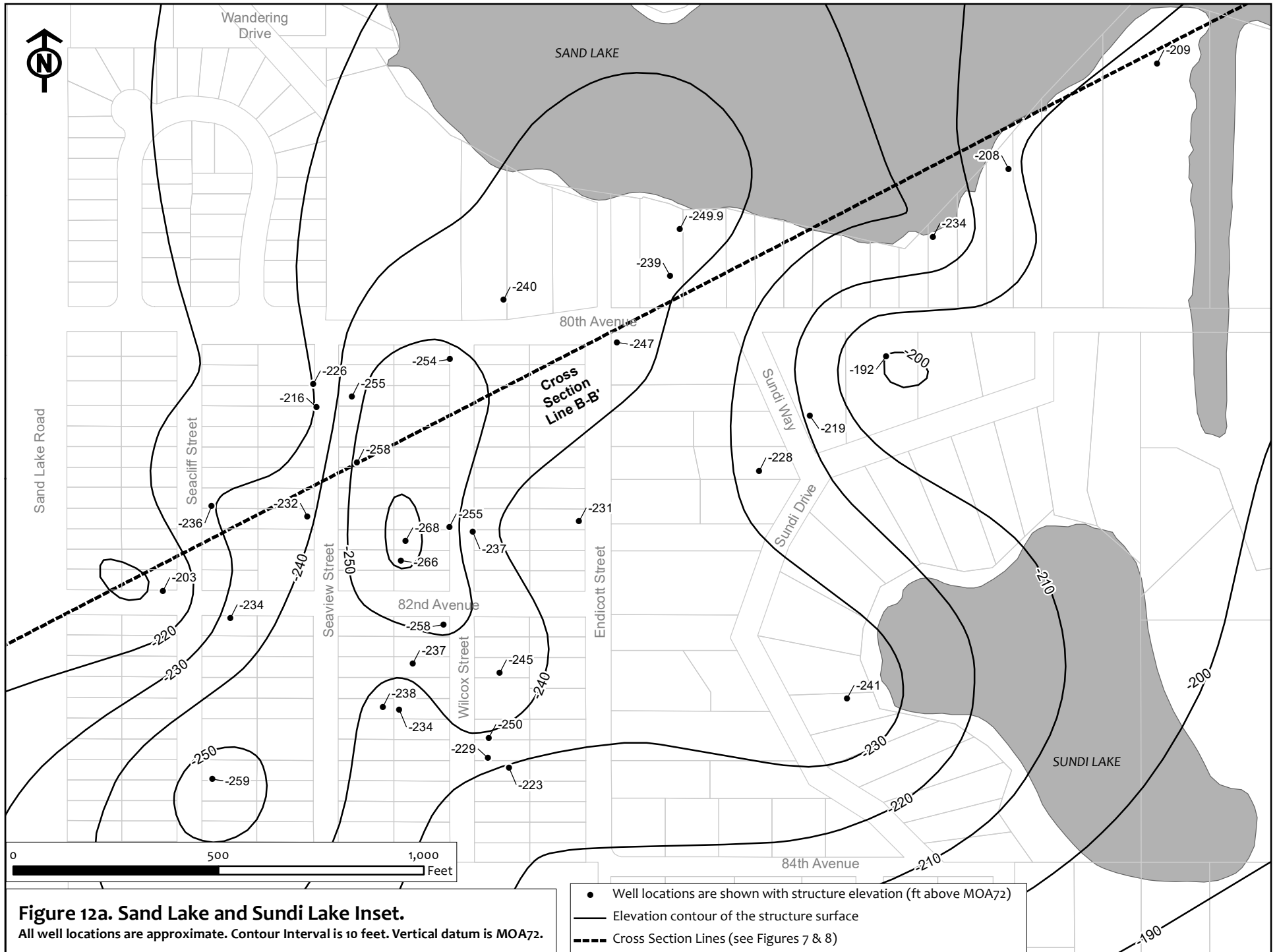
CAMPBELL LAKE

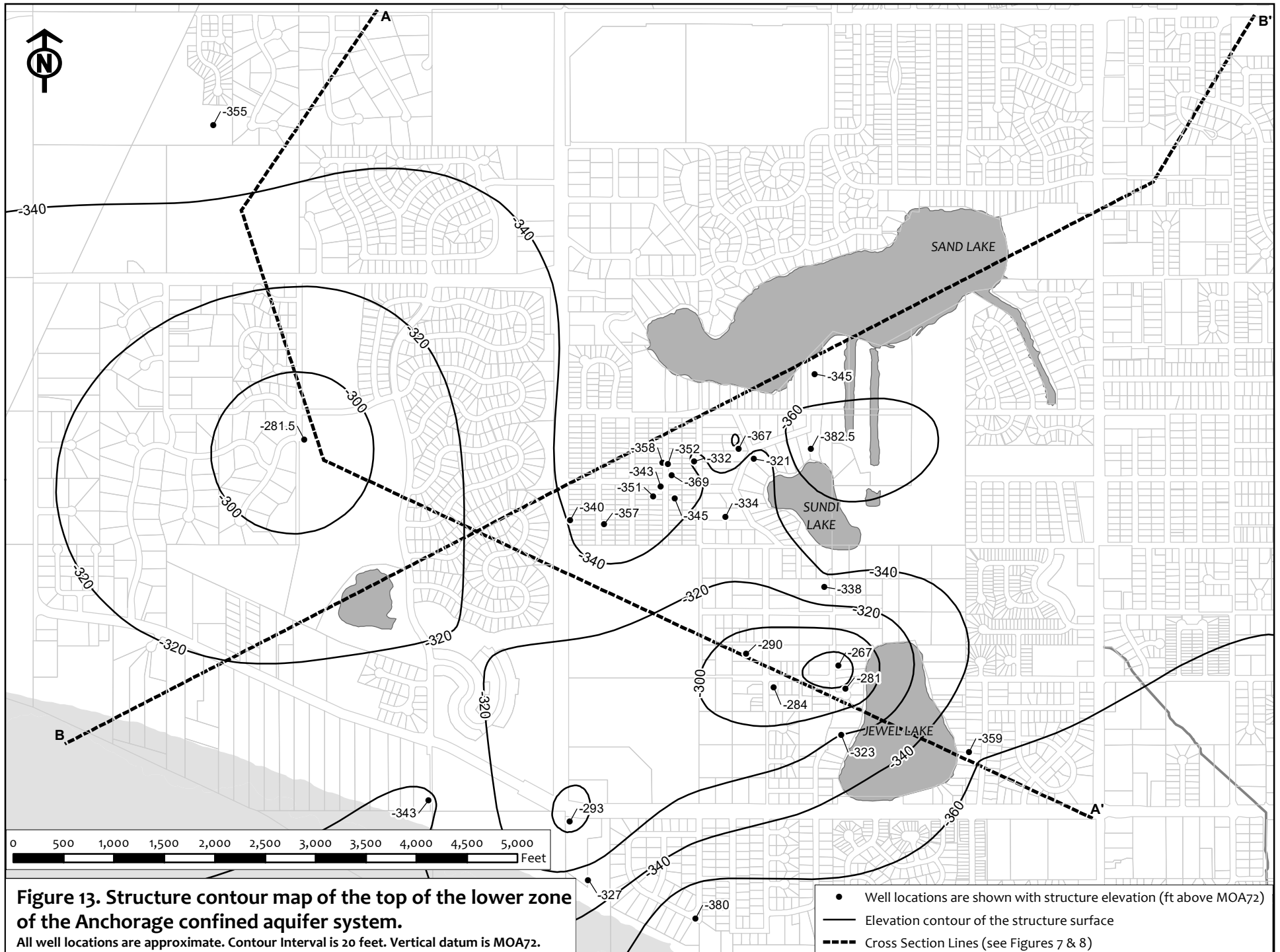


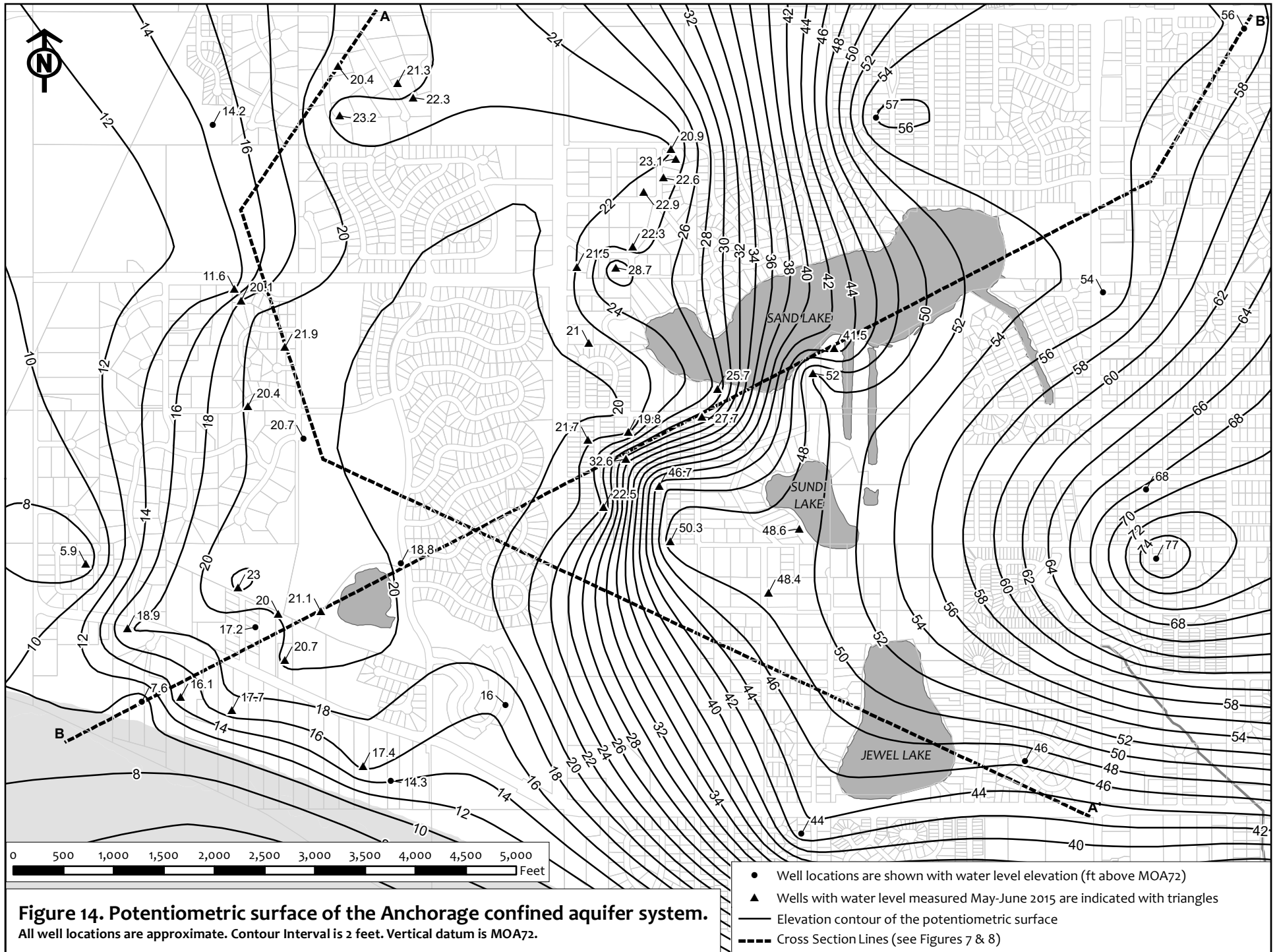


Figures 12. Structure contour maps of the top of the middle zone of the Anchorage confined aquifer system.
 All well locations are approximate. Contour Interval is 20 feet. Vertical datum is MOA72.

- Well locations are shown with structure elevation (ft above MOA72)
- Elevation contour of the structure surface
- - - Cross Section Lines (see Figures 7 & 8)







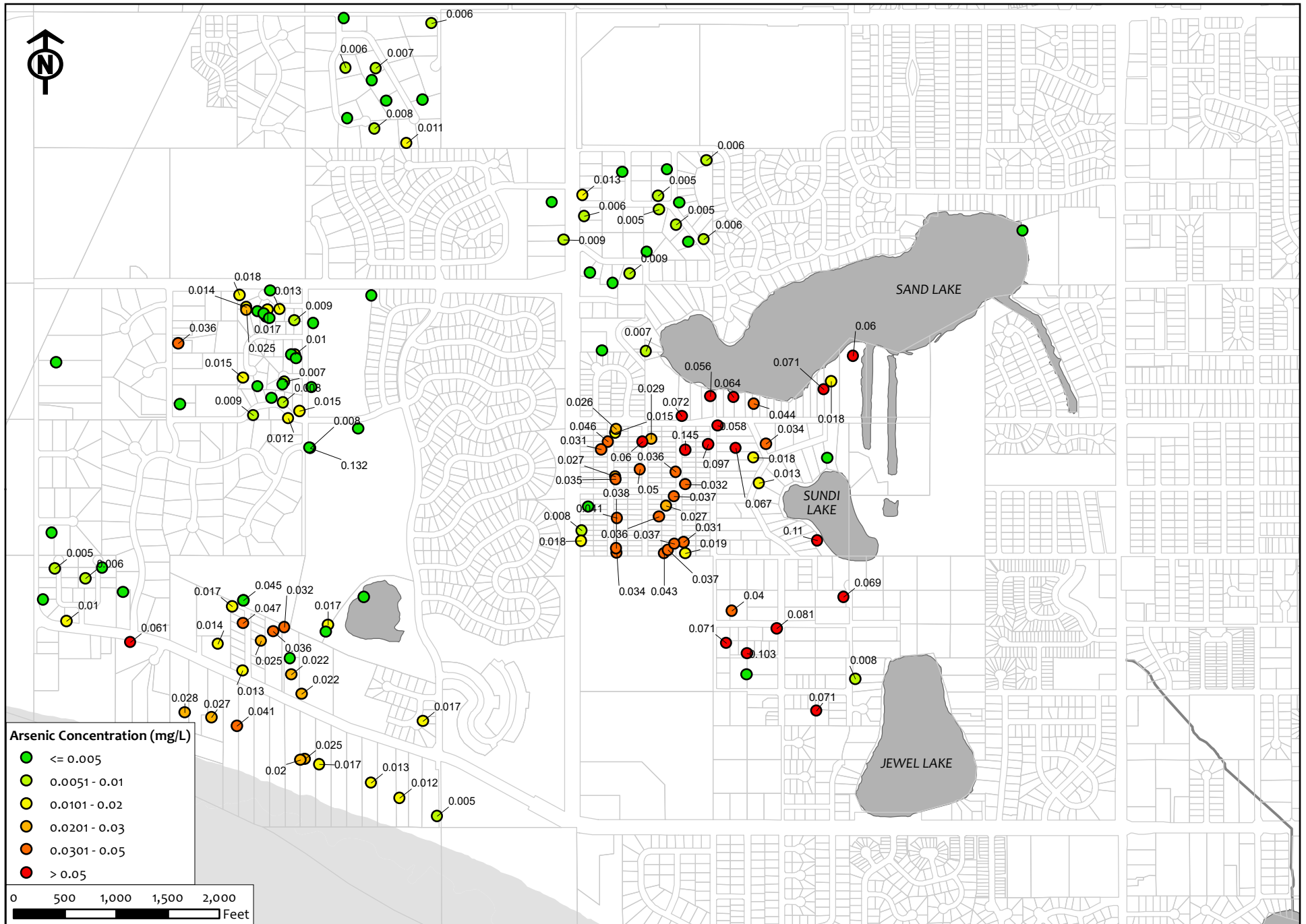


Figure 18. Arsenic concentrations from wells sampled by this study, Kane and others (2008), and reported by Municipality of Anchorage.