



AS&G Recreational Sports Park Site Plan Layout

Notes:

1. Water table elevations are 55' to 62'
2. The 7 Proposed Sports Fields are 360' X 225' in size and can be used as 21 youth fields.



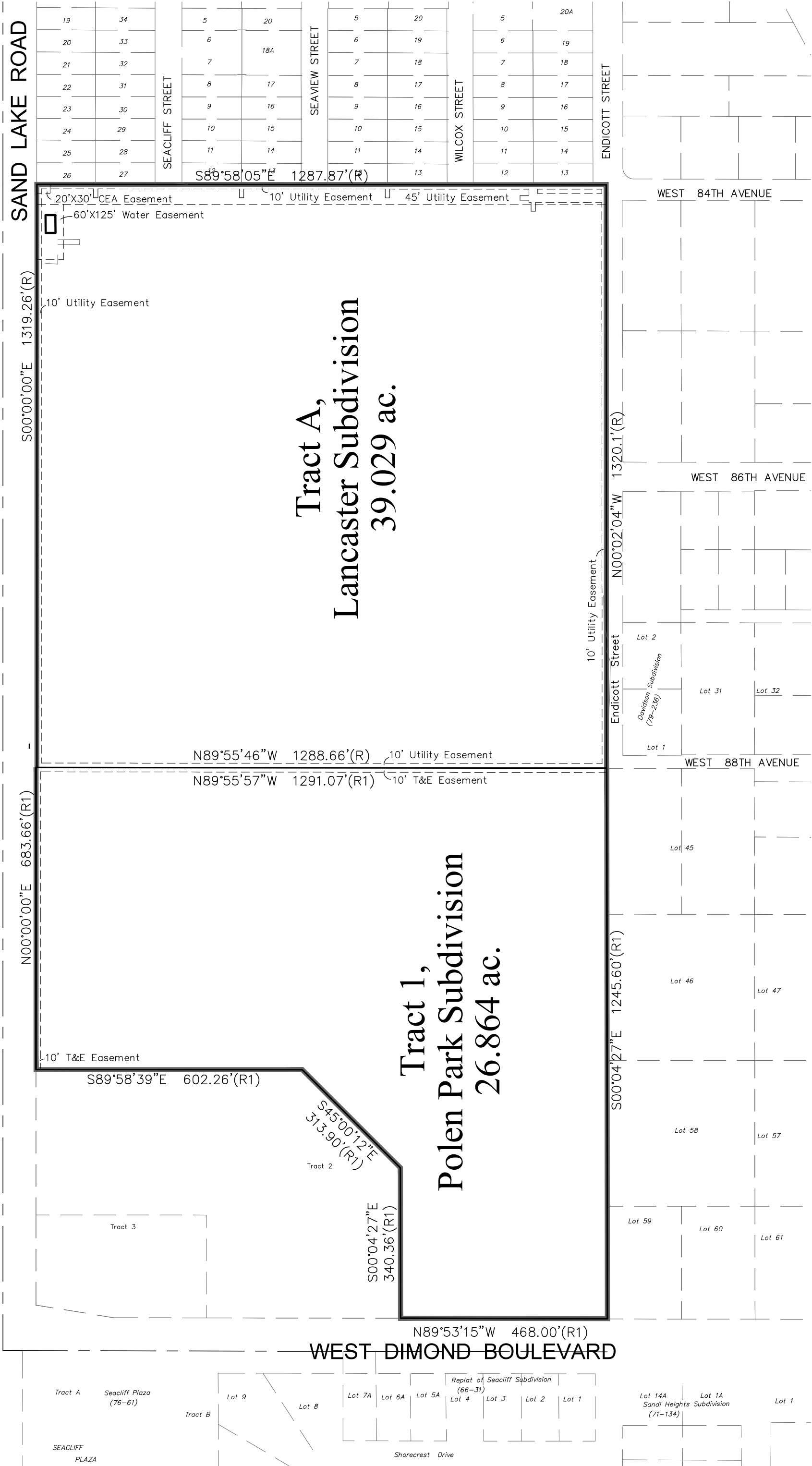


(R) Per Plat 80-59
(R1) Per Plat 2019-41

AS&G Recreational Sports Park

Notes:

1. Easement granted to Chugach Electric Association, Inc., recorded July 23, 1952 in Book 75 at Page 351, Blanket Easement for Tract 1.



Elevation Detail

