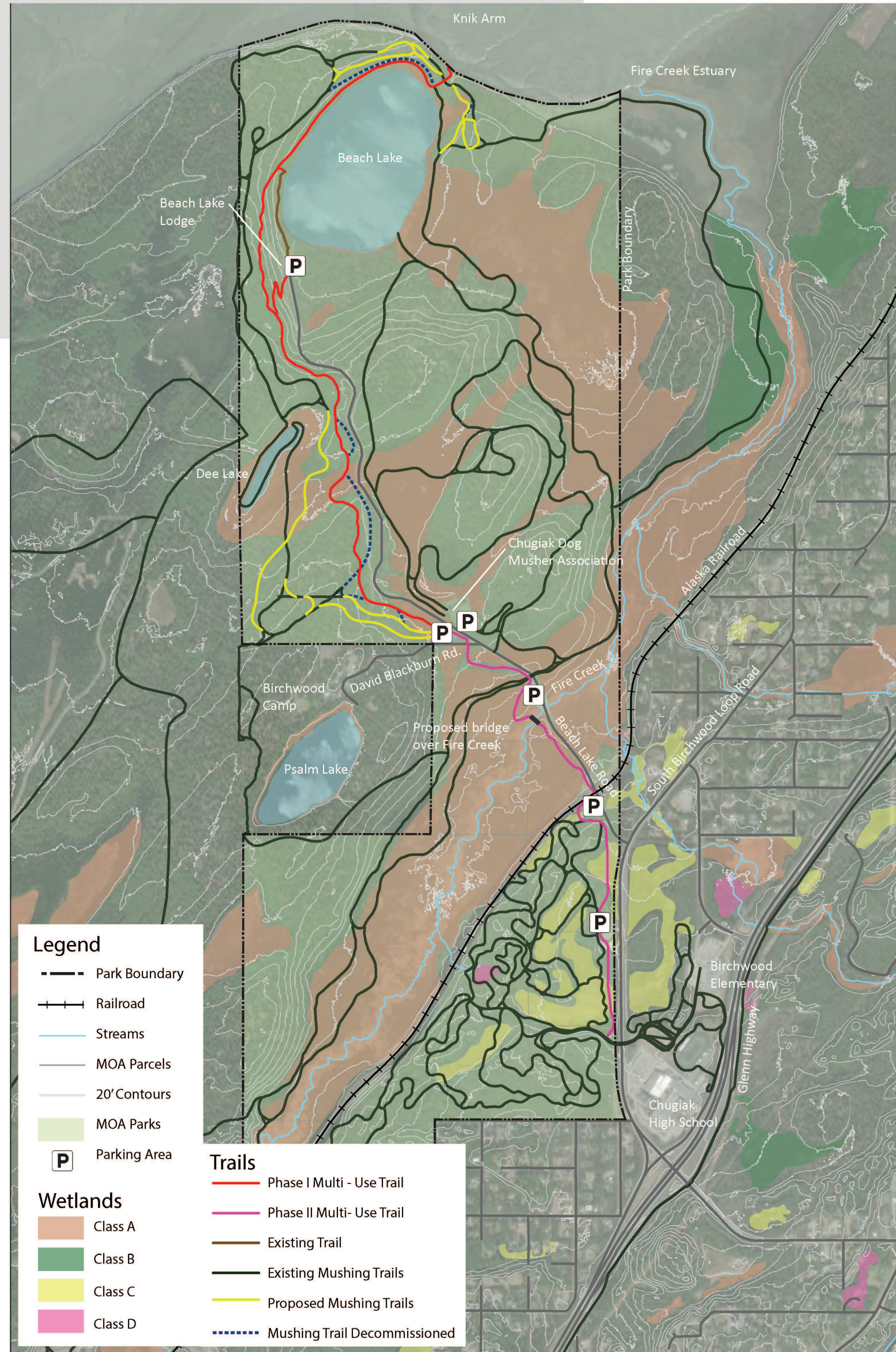


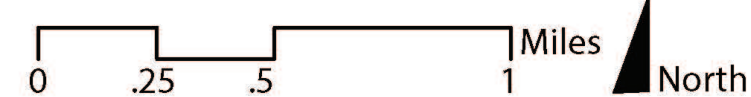
WEST BEACH LAKE

Year-Round
Multi-Use
Trail

OVERVIEW / TRAIL CLASS



OVERVIEW MAP



PROJECT OVERVIEW

- Multi-use pathway for non-motorized users, with gravel surface
- Phase I: 2.5 miles - Knik Inlet to David Blackburn Road parking area
- Phase II: 1.5 mile - David Blackburn Road to Chugiak High School
- Year-round trail will be groomed for winter use
- Improvements to mushing trails for safety & separation of users
- Project will go through MOA Trail Review process
- Phase I Construction 2024

FUNDING

PROJECT TOTAL COST: Total build estimate of \$500,000

- CMBR FUNDING: Chugach Mountain Bike Riders \$250,000
- MOA FUNDING: EAGLE RIVER/CHUGIAK P&RD \$250,000

SCOPE OF WORK

- Phase I: Construction of a year-round multi-use, gravel surface pathway
- Vegetation clearing & grubbing
- Realignment of mushing trails for improved year-round use and to reduce user conflict
- Installation of a chicane (at-grade crossing) at the Knik Inlet crossing with existing mushing trails
- Installation of directional, warning signs & kiosks

TIMELINE



Trail Design Parameters: Trail Class 4

- 15'-20' Gravel, 17'-22' Clearing Grubbing Limits, 19'-24' Clearing Limits
- Target Design Grade: Up to 10% running, 15% Short Pitch Max
- Target Cross Slope: 2% -5%, Max 10%, Design Turn Radius: 100'

Trail Design Parameters: Trail Class 4

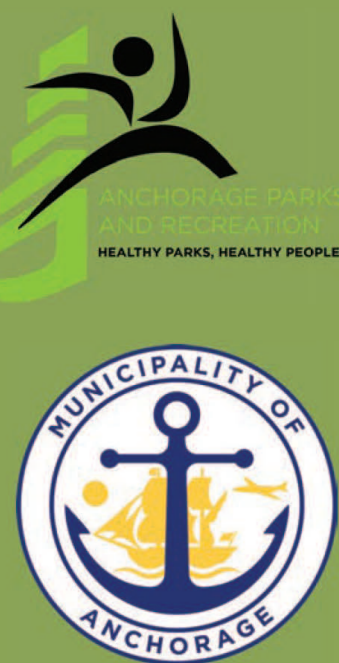
- 8' Gravel Surface, 10' Clearing Grubbing Limits, 12' Clearing Limits
- Target Design Grade: 0%-5%, Max. 7%
- Target Cross Slope: 1.5%, Max 2%



MUSHING TYPICAL SECTION



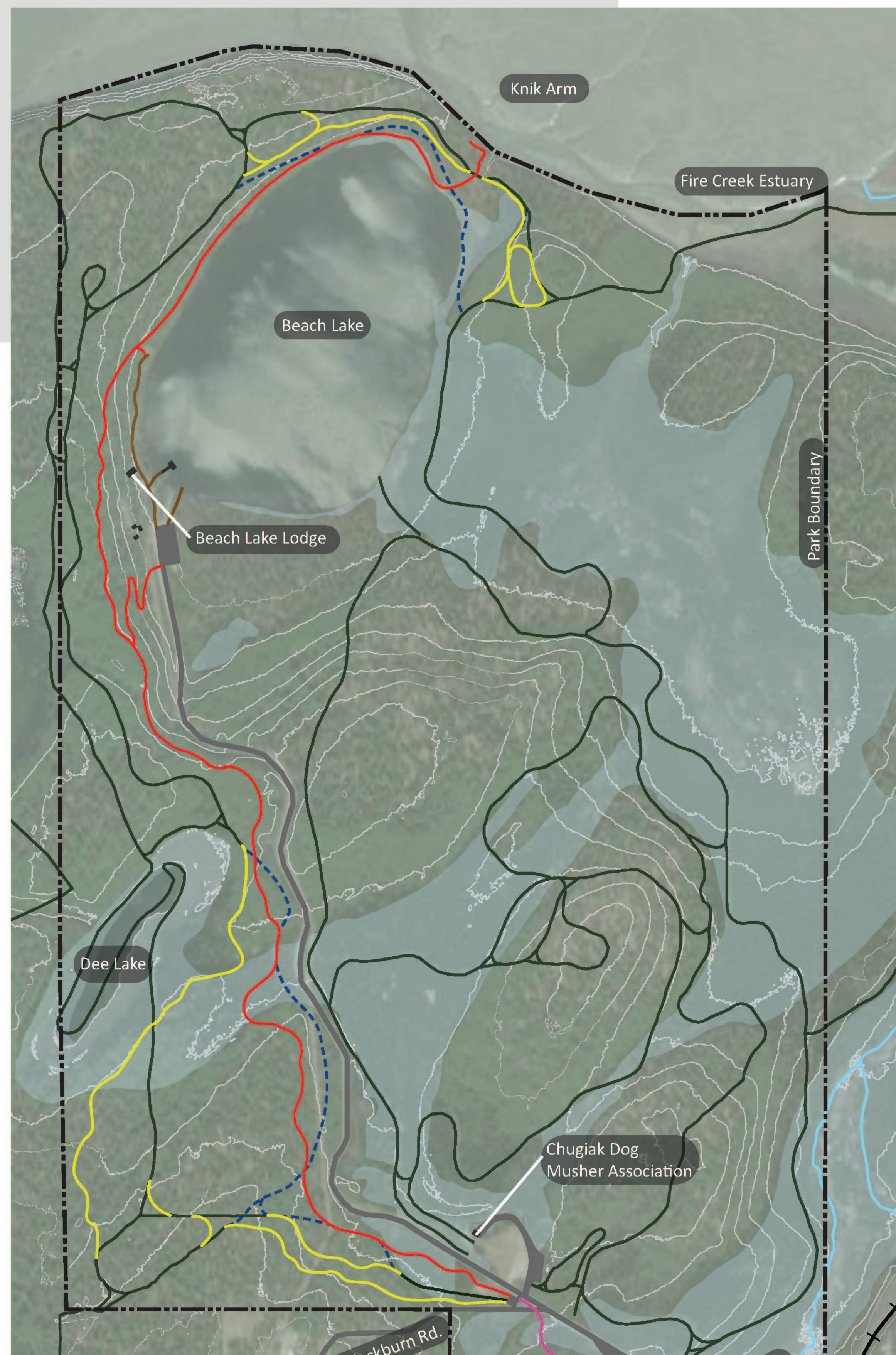
MULTI-USE TRAIL TYPICAL SECTION



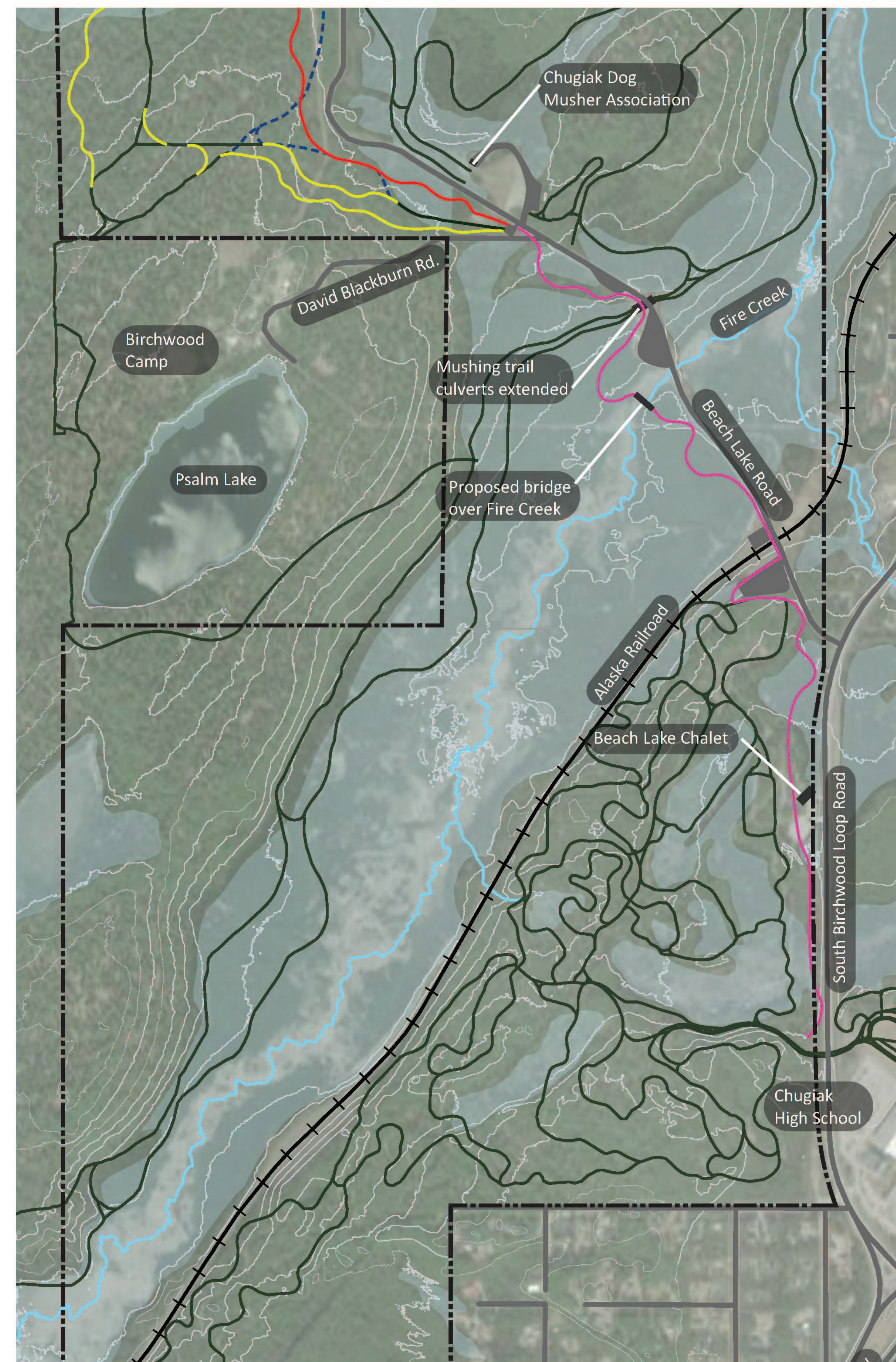
WEST BEACH LAKE

Year-Round
Multi-Use Trail

TRAIL PHASES I & II



PHASE I

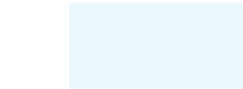


PHASE II

Legend

- Park Boundary
- Railroad
- Streams
- MOA Parcels
- 20' Contours
- MOA Parks
- Parking Area

Wetlands



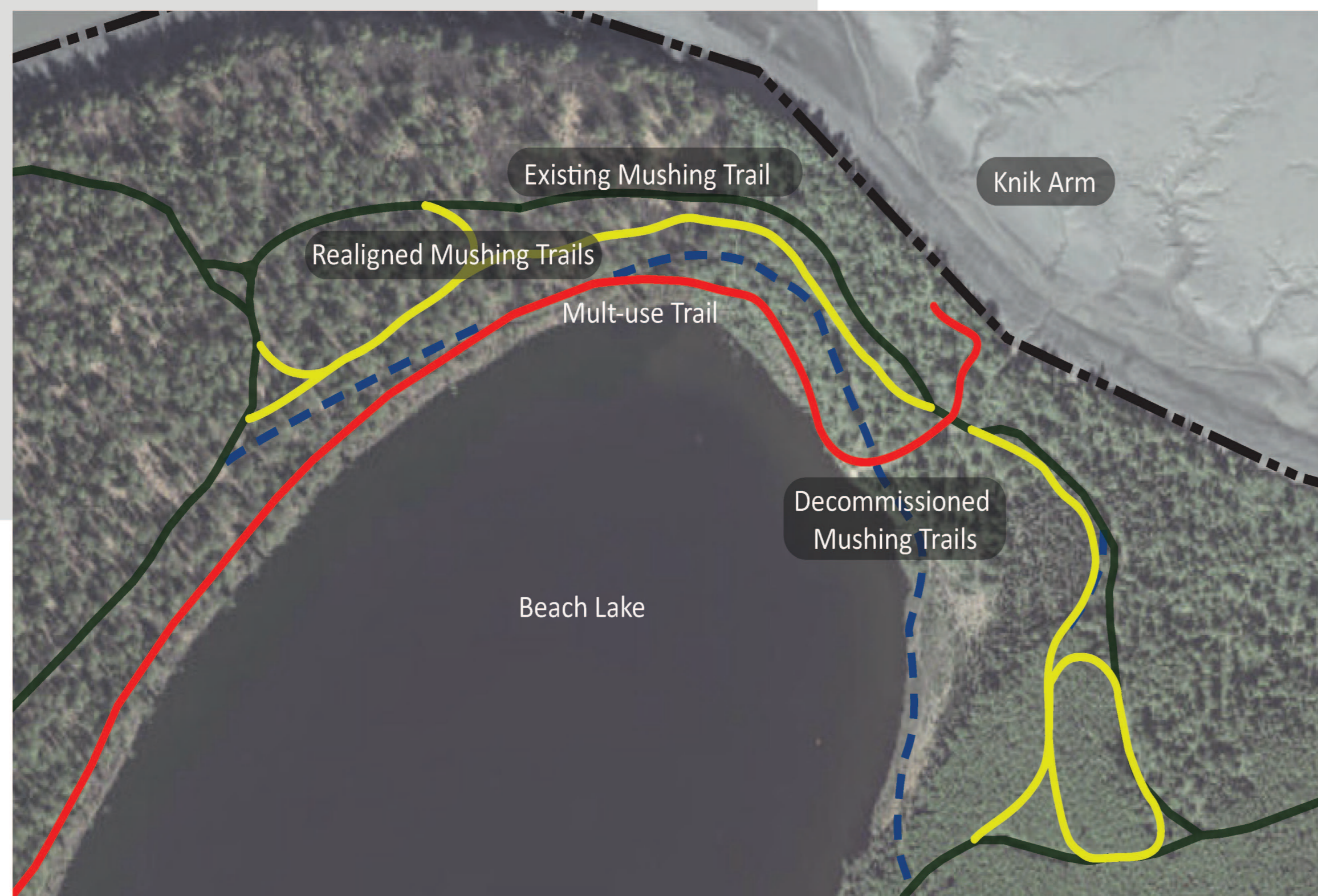
Trails

- Phase I Multi-Use Trail
- Phase II Multi-Use Trail
- Existing Trail
- Existing Mushing Trails
- Proposed Mushing Trails
- Decommissioned Mushing Trail

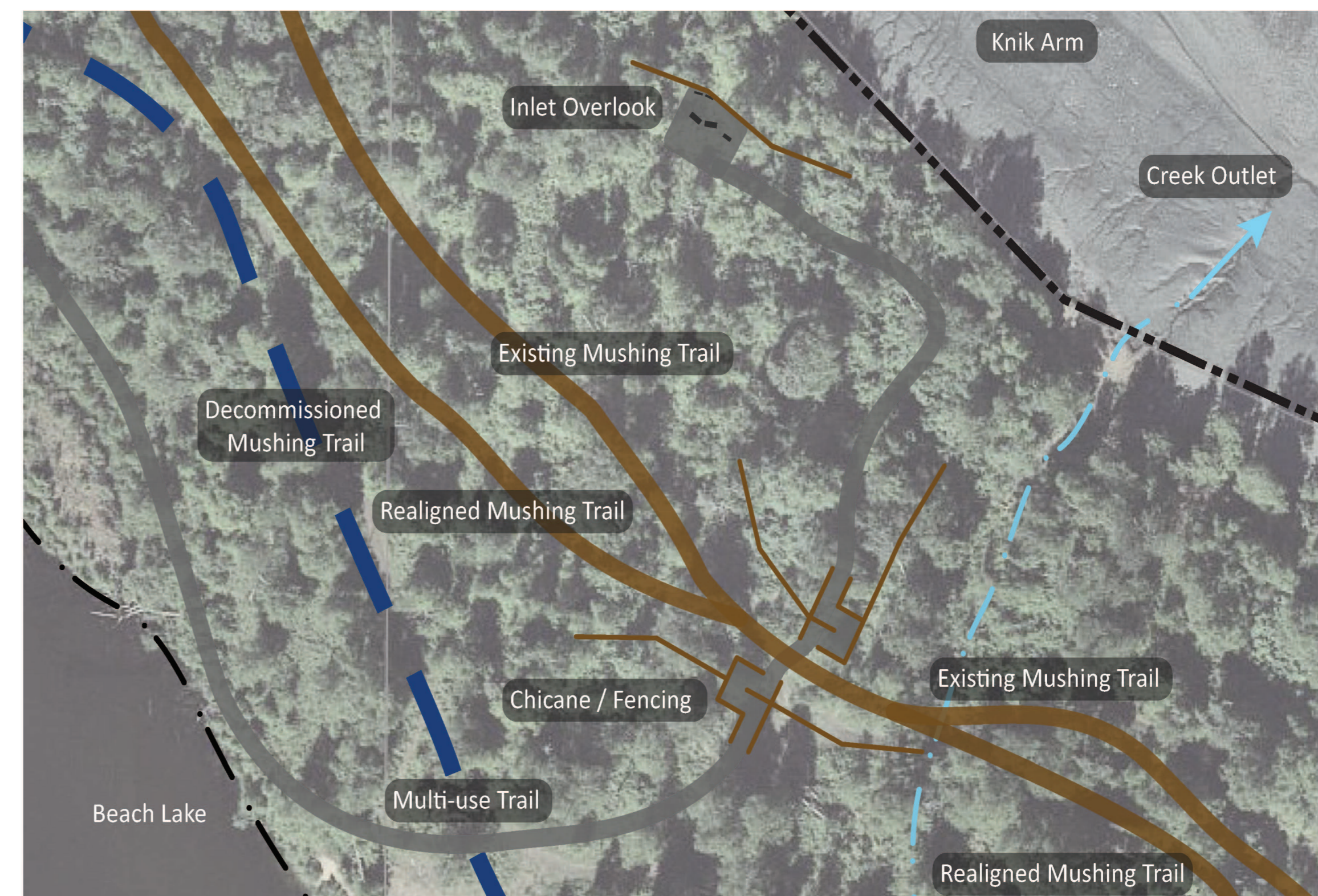


WEST BEACH LAKE

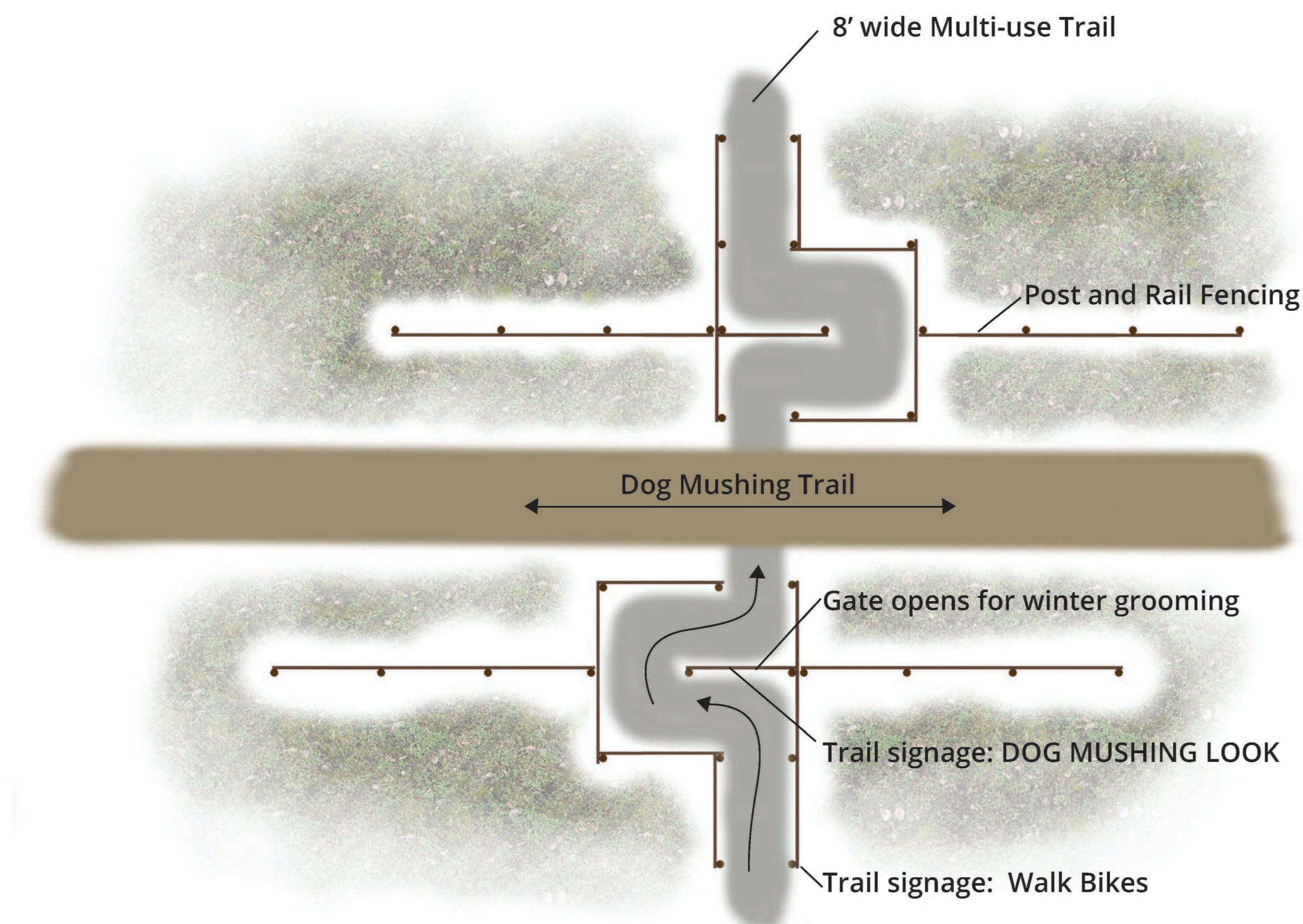
Year-Round
**Multi-Use
Trail**



PLAN VIEW - Realigned Mushing Trails



PLAN VIEW - Chicane Crossing



CHICANE DETAIL



CHICANE ILLUSTRATION

CHICANE CROSSING

