

At Central Lutheran we are called to share God's love with all. We believe in living out God's abundant grace and love through worship, learning, fellowship and service.

The purpose of **In Our Backyard** is to provide safe interim supportive housing and connections to support services for our houseless senior neighbors as they work to obtain a permanent home.

1

In Our Backyard



The Problem: Housing and Homeless Crisis in Anchorage

Phase 1: Five Pallet Shelters for Transitional Housing

In Our Backyard is an opportunity to be proactive in addressing the needs of our houseless neighbors. This project will be a model for other faith based organizations, community groups, or businesses to address homelessness.

2

Who:

- The target community is elders, aged 50 and older, with the ability to live independently, either singles or couples, who are in need of transitional housing while they wait for permanent housing to become available. Pets may also be welcomed. The need for this population is based on data from Anchorage Coalition to End Homelessness (ACEH). 27.1% of homeless people are in the age range of 45-64. Lutheran Social Services has also identified a need for transitional housing for this age range.

Occupant Criteria:

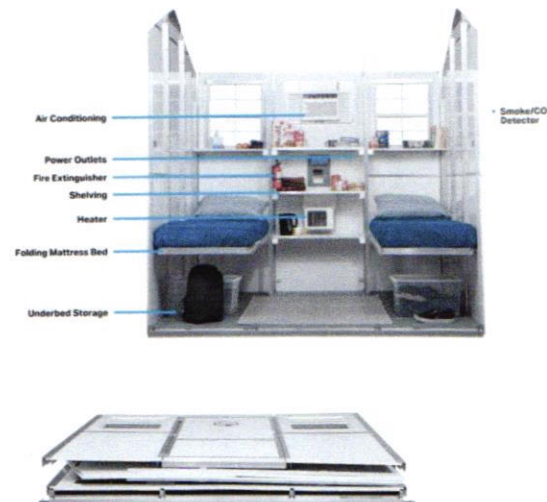
- Age 50 and older
- Ability to live independently
- No alcohol or marijuana use on site
- No substance abuse on site
- Not on sex offender registry
- Minimum monthly fee will be held in savings and returned to occupant when they enter permanent housing
- Occupant Agreement

“The number of unhoused people over 65 and older could triple by 2030.” *Addressing Homelessness Among Older Adults: Final Report US Department of Health and Human Services. October 2023*

3

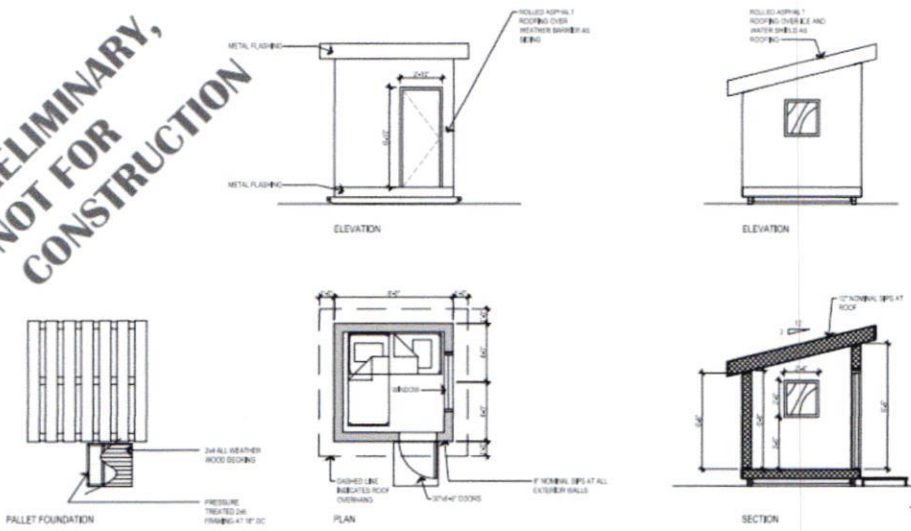
What:

#1 Option :70 sq feet, Pallet Shelter \$17,125 (includes heater, bunk, mattress)



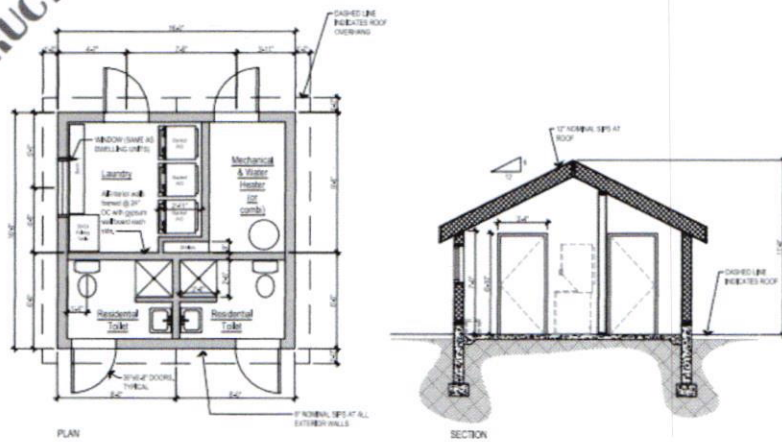
4

**PRELIMINARY,
NOT FOR
CONSTRUCTION**



Transitional TinyHaus - Single Unit Version
SCALE: 1/4" = 1'-0"

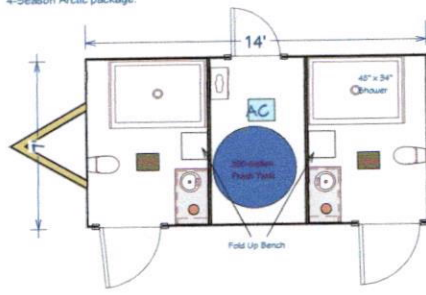
**PRELIMINARY,
NOT FOR
CONSTRUCTION**



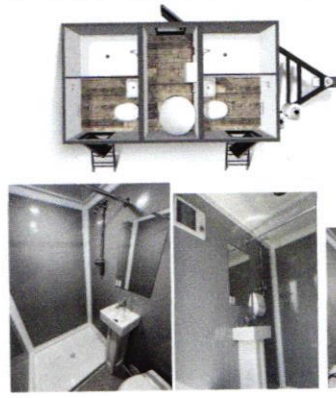
Comfort Station
SCALE: 1/4" = 1'-0"

4 Season bathroom/shower trailer by Elk Creek Trailers. *NPLH Program (No Place Like Home).*
\$60,000

4-Season Arctic package.



Designed By: Elk Creek Trailers LLC
Paul L. Heacham C: 420.275.8800 E: info@ElkCreekTrailers.com



Laundry Options - Laundromat gift cards, 3rd Avenue Navigation Center, Hope Center or Hill's Laundry Service (used by family emergency shelter)

7

Upper Lot Draft

This is the most likely site.
NVision Architecture is developing a site plan and permitting requirements to be ready by the end of March



8

How?

- In Our Backyard is now a non-profit registered in the State of Alaska and the IRS
- Christian Health Associates and Lutheran Social Services of Alaska will provide guidance for the project.
- Anchorage Coalition to End Homelessness will screen potential occupants for individuals who will likely be successful utilizing the interim supportive housing and willingly work with case managers to find permanent housing
- ACEH, LSSA or CSS will provide case managers
- Bean's Cafe will possibly provide free meals
- Support from St. John Methodist Church, First Covenant Church, Shiloh Baptist Missionary Church and other faith groups and local businesses
- Space on Central Lutheran's property to place shelters.
- Space in Central Lutheran for an office for a case manager to meet with occupants (10-12 hours per week).
- Funding from grass roots efforts, foundations, grants.

9

Why Central?

We are called to share God's Love.

- Close proximity to bus stops.
- Close to Senior Center - 0.8 miles
- Close to 3rd Ave Navigation Center - 1.3 miles
- Near medical offices
- Available space
- We are known in the community to be a loving, caring and trustworthy partner with neighbors.
- Central supports the Family Emergency Cold Weather Shelter, Helping Hands Closet, Clare House, Foot & Wound Clinic, Listening Post.

10

When?

Timeline

10/1/23 - 2/1/24

Approval from Church
Become a 501c3 - **In Our Backyard**
Site Plan work with Architect- due 2/9
Capital and Operating Budgets completed
Apply for Grants

2/1/24 - 5/1/25

Grant Funding Secured
Permits/Waiver
Structures Ordered or Built
Bathroom structure ordered

5/1/24 - 9/1/24

Structures built and furnished
Bathroom facility completed
Welcome Occupants

11

Contact Us

[In Our Backyard](#)

inourbackyard-ak.org

Email Address:

info@inourbackyard-ak.org.

Mailing Address:

PO Box 91986, Anchorage AK, 99509



12

**Volunteer and In-Kind Opportunities for
In Our Backyard**

Now	Spring/Summer	On Going
Invitations to Present	Construction Help	Prayer
Share website on Social Platforms, Church Websites, Newsletters	Making curtains	Mentoring Guests in coordination with guest caseworkers.
Community Engagement	Painting	Driving guests to appointments in coordination with guests caseworkers.
Grant writing	Gardening/Landscaping	Sponsoring get together to cook meal, games
	Build Picnic Tables	Minor repairs
		Cleaning When a guest moves out
		Putting together "Welcome" kits for new permanent residence

Donations

- 10 under bed plastic storage bins
- 5 or 6 mini fridges
- 2 sets of sheets for each bed
- Blankets and pillows for each bed
- 5-6 microwaves
- Set of towels for each occupant
- 5-6 floor rugs and door mats
- Flowers, soil, planters for landscaping

Financial contributions are also welcome! Please go to our web page to donate on line or to contact a board member about financial donations.

<https://inourbackyard-ak.org/>