



CITIZENS ADVISORY COMMITTEE CONCEPT 3 – ENHANCED DEVELOPMENT

DRAFT PROGRAM

Concept 3 - Enhanced Development includes the development of a variety of trail classes appropriate for a diversity of abilities and age groups. This trail system is denser than that of Concept 2. The level of development of structures will be nominal and consist of trail heads, parking, and constructed restrooms. Outdoor education will be provided through the use of Bear Valley Elementary School during the summer and a minimal structure such as a yurt, which could also function as a warming hut during the winter. Facilitating connections with other greenbelts and recreation areas is also an essential consideration.

Trails

Network of sustainable multi-use trails, appropriate for a variety of abilities and age groups (including horses, bikes, skijoring)
Looped sustainable Class 4 trail north of Clark's Road
Sustainable Class 4 ADA accessible boardwalks and trails with wildlife viewing platforms where appropriate of moderate density
Sustainable Class 2 and 3 trails on the north side of the ridge of high density
Sustainable Class 2 trails between the ridge and Clark's Road of moderate density
Connect to Storck Park, Bear Valley Elementary School, Chugach State Park, and greenbelts

Amenities

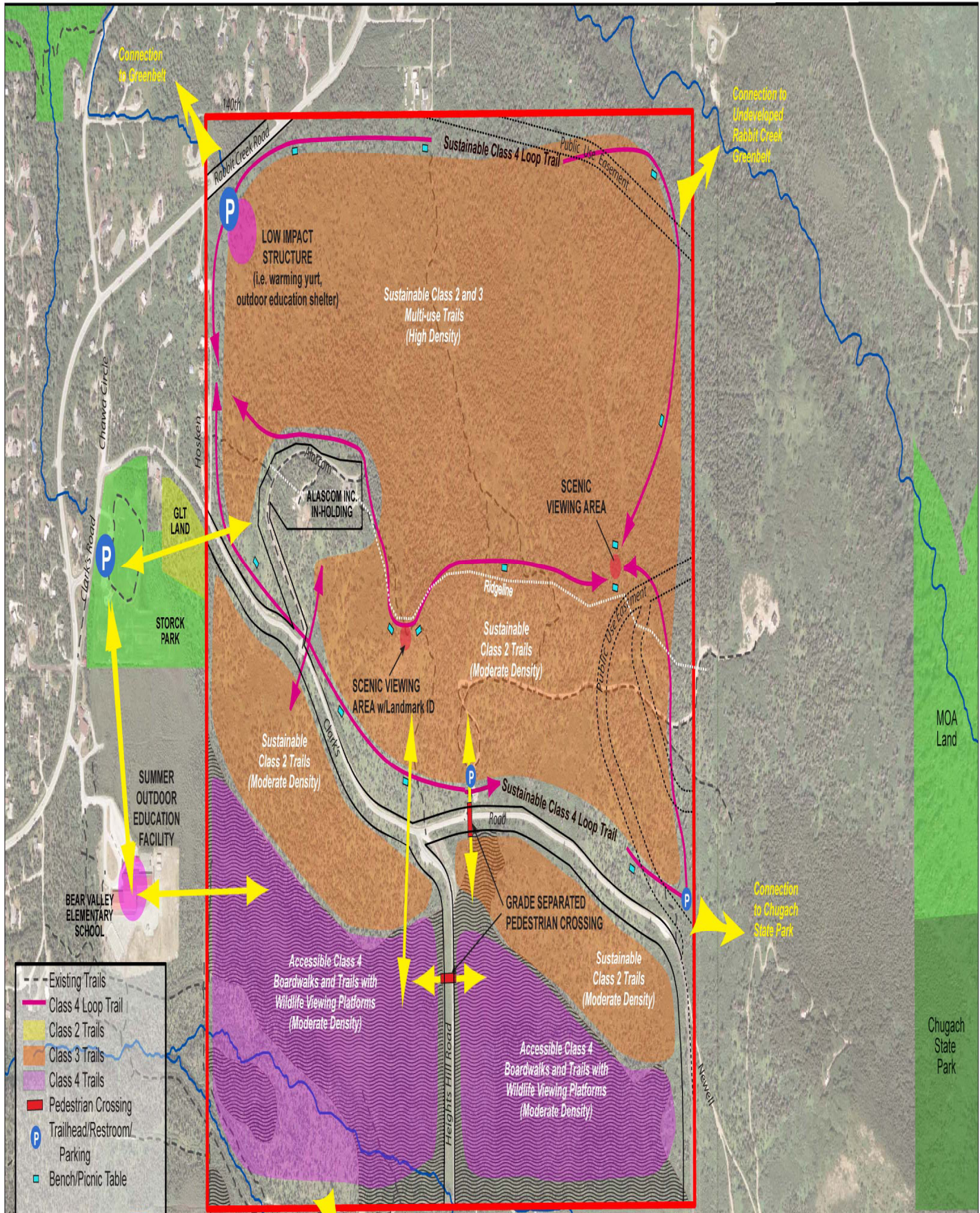
Bear Valley Elementary School used as a summer outdoor education indoor facility
Warm up yurt/outdoor education
Benches or individual picnic tables at scenic viewing areas and set in a natural setting to encourage family use and un-programmed play by children.
Where appropriate, design sustainable amenities for use, as well as interpretation and education, such as solar, wind, water catchment, composting toilets, etc.
Scenic viewing areas with landmark identification
Wildlife viewing areas
Educational/interpretive signage on appropriate trails and boardwalks
Parking and constructed restrooms at trail heads

Parking/Access

Non obtrusive locations/yet visible and safe
Adequate for current and future use
Primary parking at Storck Park and near Rabbit Creek on N NW corner of Section 36
Limited secondary parking at trail heads

Funding

Wetland banking
Recreation fees (parking, permits, events, concessionaire)
Warming hut services and amenities
Outdoor education fees and fee on outdoor education provider
Volunteer
Youth Employment in the Parks
Grants



- - - Existing Trails
- Class 4 Loop Trail
- Class 2 Trails
- Class 3 Trails
- Class 4 Trails
- Pedestrian Crossing
- P Trailhead/Restroom
- P Parking
- Bench/Picnic Table

- MOA Lands
- Great Land Trust (future acquisition)
- Development (Low Impact)
- Wetland

SECTION 36

Section 36 Master Plan
 Draft Concept 3

